

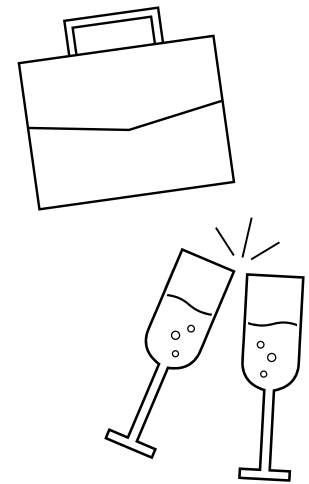
Event Rental Guide

Grand Hall

Over 7,500 square feet of indoor space including a bar, catering kitchen, bathrooms, and bridal suite. Plenty of space for dancing, games, and team building exercises.

Ideal for up to 440 seated guests.

	Friday & Saturday	Sunday-Thursday
Grand Hall (AM)	\$3,000\$1,500
Grand Hall (PM)\$5,000\$3,000



Fountain Hall & Patio

Indoor/Outdoor package space perfect for intimate gatherings. The fountain room and connected outdoor area make this venue perfect for networking events, cocktail parties, and more intimate group gatherings.

Ideal for up to 70 seated or 95 standing guests.

	Friday & Saturday	Sunday-Thursday
Fountain Room & Patio (AM)	\$1,000\$500
Fountain Room & Patio (PM)\$2,000\$1,000

All Venue Rentals Include:

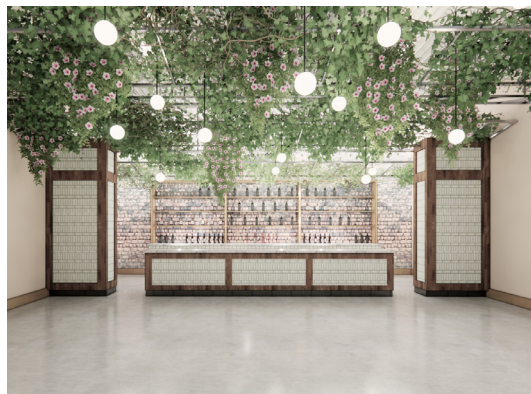
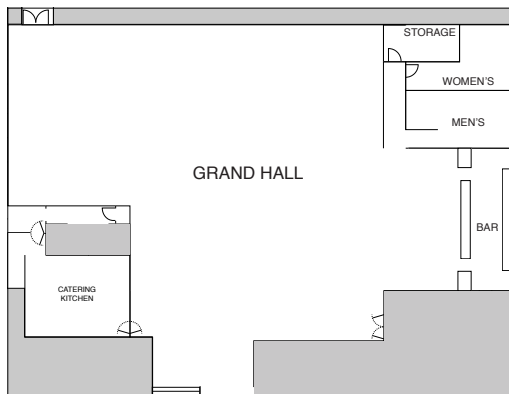
- Day-of Venue Coordinator on-site to assist with restrooms, lighting, and audio/visual equipment
- Floor plan and day-of event timeline assistance and review
- Audio, lighting, and projector equipment
- 5-foot diameter round tables
- High-top cocktail tables
- Tables and chairs included with all Grand Hall rentals up to 250 guests

Grand Hall Rental Information

Over 7,500 square feet of indoor space including:

- Catering kitchen, storage, and dishwashing space
- Full bar with refrigeration
- Dedicated bathrooms and a private storage room
- Customizable audio, lighting, and projector equipment
- 5-foot diameter round and rectangular tables
- High-top cocktail tables

Ideal for up to 440 seated guests.



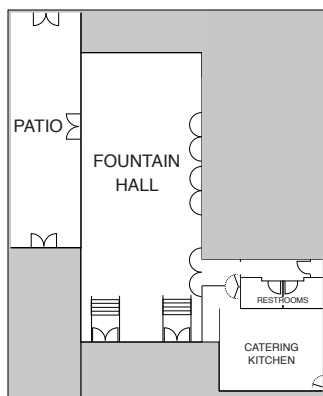
* Renderings are subject to change

Fountain Hall & Patio Rental Information

Over 1,900 square feet of indoor space and 900 square feet of patio space including:

- Catering kitchen and storage area
- Dedicated bathrooms
- Option for mobile satellite bar
- Audio and big-screen display equipment
- Rectangular tables with bench-style seating

Ideal for up to 70 seated or 95 standing guests.



* Renderings are subject to change

Additional Rental Information

Payment & Reservation Policy

Upon signing of the venue rental contract, a non-refundable deposit of 50% of your estimated venue fee will be due to reserve the space. The remaining balance is due 30 days prior to the event.

Payment by check is preferred, but debit or credit card is accepted with an additional 3% processing fee.

Preferred Caterers*



* Caterers are required to pay a 15% commission fee to La Brasa based on the total food cost of your event. Consult with your caterer how this might impact your invoice.

Hotel Partner

The Manchester
www.themanchesterky.com
contact@themanchesterky.com
(859) 785-3900

Additional Rentals**

Bryant's Rent-All
www.bryantsrentall.com
melissa@bryantsrentall.com
(859) 252-0408

** Tableware & linens are required from outside vendors. Additional tables & chairs will need to be rented if guest count is over 250.

Bar & Beverage Packages

Beer & Wine



\$10 per person for first hour

\$5 extra per person
for each additional hour

Bar stocked with beers, seltzers,
white & red wines

Beer, Wine & Liquor



\$14 per person for first hour

\$6 extra per person
for each additional hour

Bar stocked with beers, seltzers,
white & red wines

Single mixed drinks with liquor
including bourbon, gin, whiskey,
rum, tequila & vodka

Add-Ons

Starting at \$5 extra per person

Champagne Toast
Specialty Cocktails
Margaritas
Mimosas

Looking to upgrade to
premium liquors?
Add \$2 extra per person,
per hour

Beers/Seltzers

Bud Light, Lagunitas IPA, Michelob Ultra, Miller Lite, White Claw,
Woodchuck Amber Cider, Seasonal Rotator

Wine

Cupcake Pinot Grigio, Josh Cellars Cabernet Sauvignon, La Crema
Chardonnay, La Marca Prosecco, Meiomi Pinot Noir

Standard Spirits

Evan Williams Bourbon, Beefeater Gin, Jack Daniels Whiskey, Cruzan
White Rum, Sailor Jerry Dark Rum, El Jimador Tequila, Pinnacle Vodka

Premium Spirits

Woodford Reserve Bourbon, Tanqueray Gin, Crown Royal Whiskey,
Bacardi White Rum, Captain Morgan's Dark Rum, Milagro Tequila, Tito's Vodka

Bar Packages can be booked for a maximum of 4 hours. Includes Coca-Cola products, juices, ice, cocktail napkins, and plasticware. A service fee of 20% plus applicable tax will be charged on the higher of the total beverage spend or the beverage minimum for the venue rental. The fee includes bartenders, servers, and staff to provide the appropriate level of service. Additional staffing, extra bar location and extended service can be accommodated for a fee.

Site Map

